

# Hydraulic Surface Grinder Control Valve

Mechanically Operated Direction Valve  
Solenoid Pilot Operated Directional Valve  
Double Way-Throttle Control Valve  
For Dresser Mounted on Wheel Head  
Throttle Control Valve  
Control Shaft



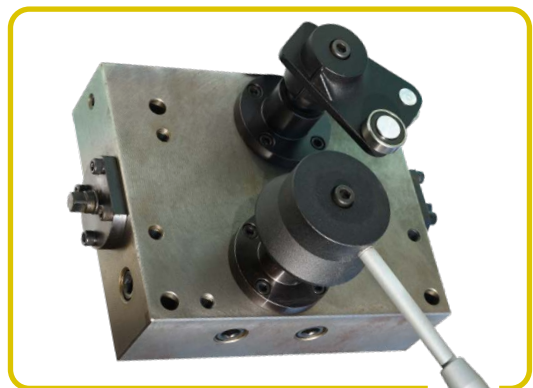


# Contents

<b>Technical Info.</b> .....	04
<b>Mechanically Operated Direction Valve</b>	
1020, 1224 .....	06
1632 .....	07
2040, 2448 .....	08
1512, 2012 .....	09
<b>Solenoid Pilot Operated Directional Valve</b>	
SOL-04 .....	10
SOL-06 .....	11
SOL-08 .....	12
<b>Double Way-Throttle Control Valve</b>	
TV-AB-04 .....	13
TV-AB-06 .....	14
TV-AB-08 .....	15
<b>For Dresser Mounted on Wheel Head</b>	
DMOW .....	16
<b>Throttle Control Valve</b>	
SOL-04TV .....	17
<b>Control Shaft</b>	
CS .....	18



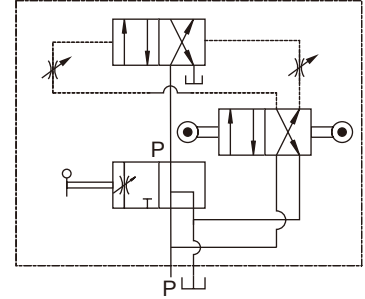
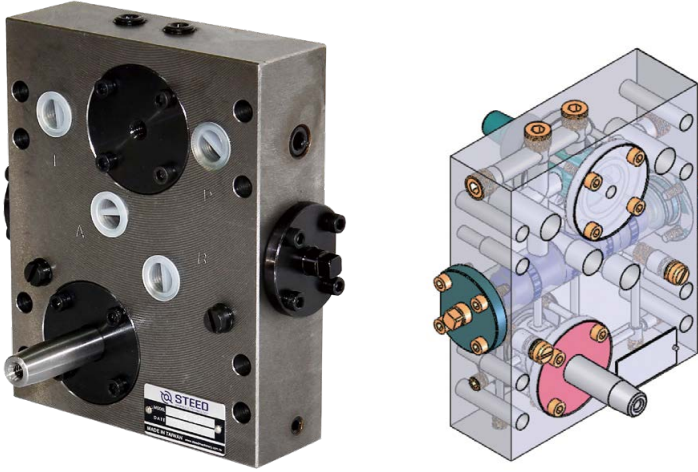
# Technical Info.



\* Our surface grinder control valves are used for surface grinding machine only.

# 1020, 1224

## SYMBOLS

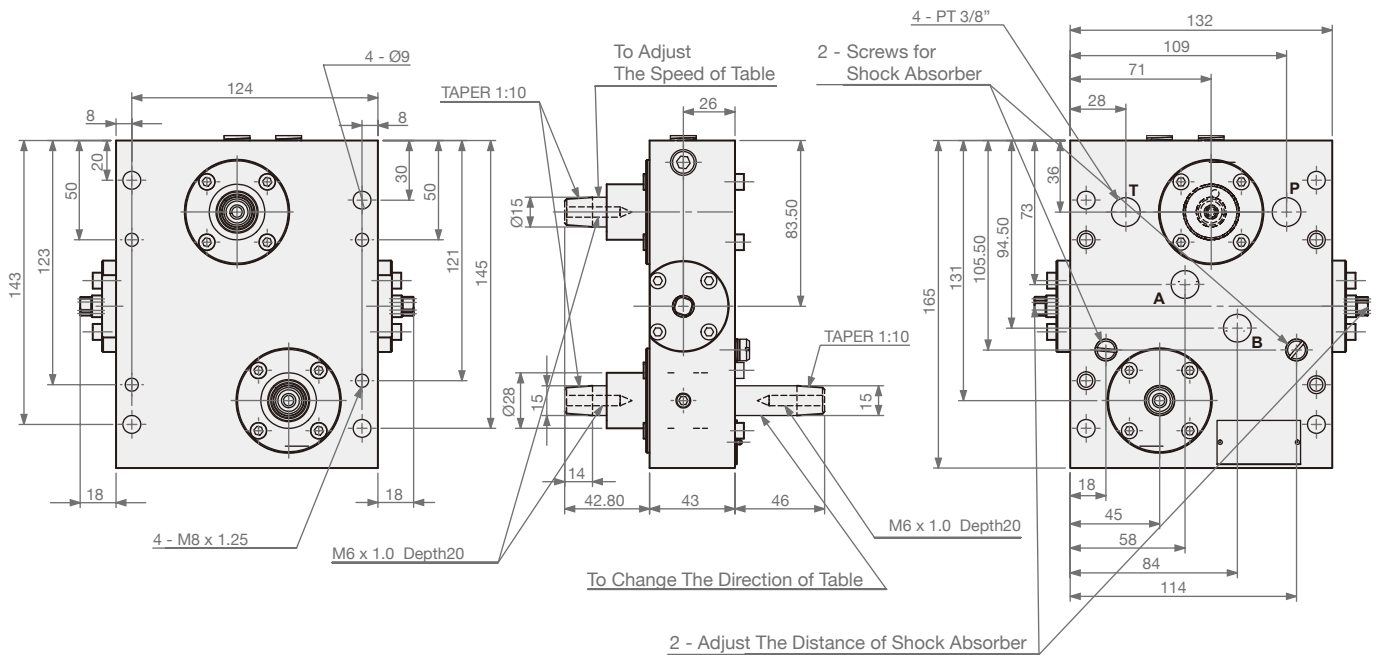


## MODEL SPEC.

Model	Rated Flow Capacity (l/min)	Max. Pressure (kgf/cm <sup>2</sup> )	Thread Connection (PT)	Weight (kg)
1020	20	40	3/8"	6.72
1224	35	40	3/8"	6.72

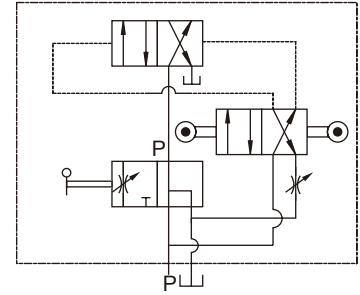
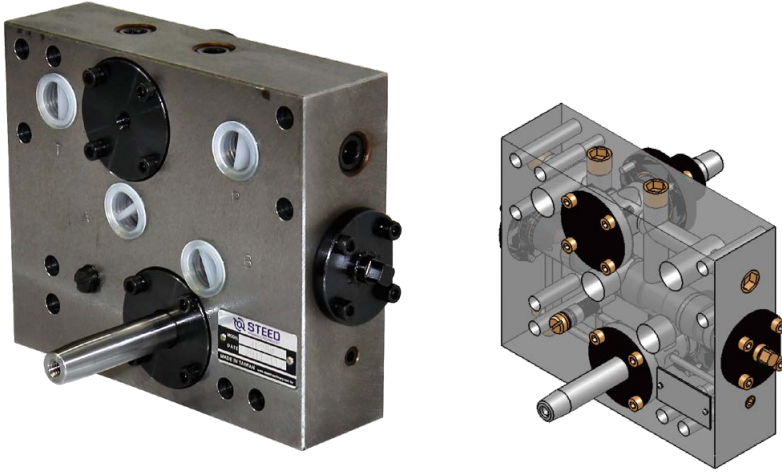
## DIMENSION

( UNIT : mm )



# 1632

## SYMBOLS

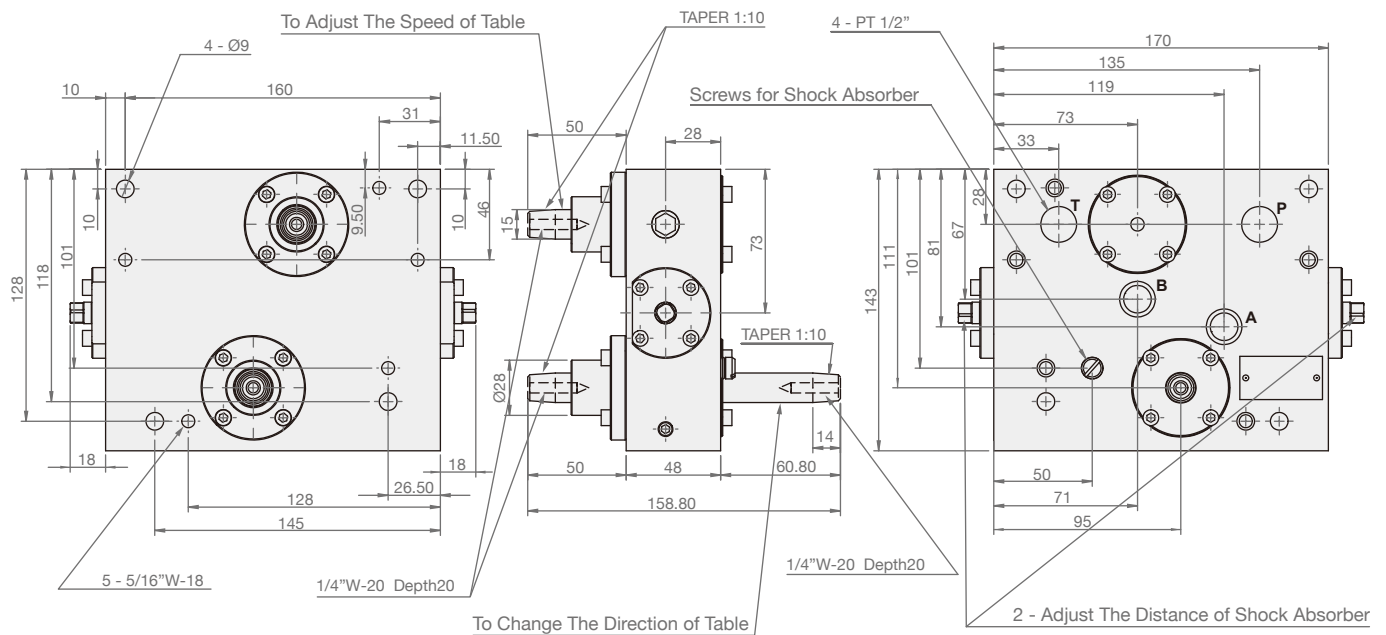


## MODEL SPEC.

Model	Rated Flow Capacity (l/min)	Max. Pressure (kgf/cm <sup>2</sup> )	Thread Connection (PT)	Weight (kg)
1632	60	40	1/2"	8.625

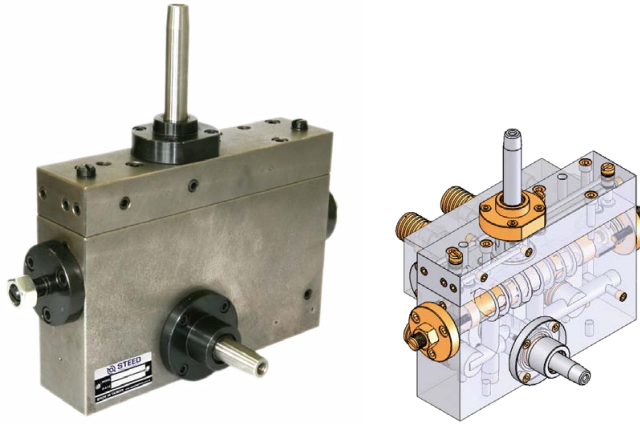
## DIMENSION

( UNIT : mm )

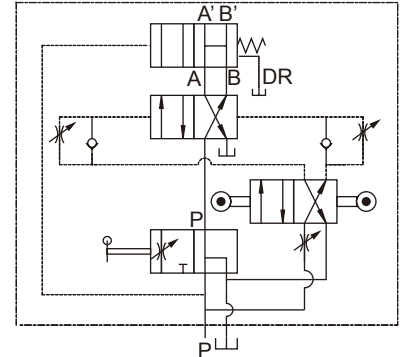




# 2040, 2448



## SYMBOLS

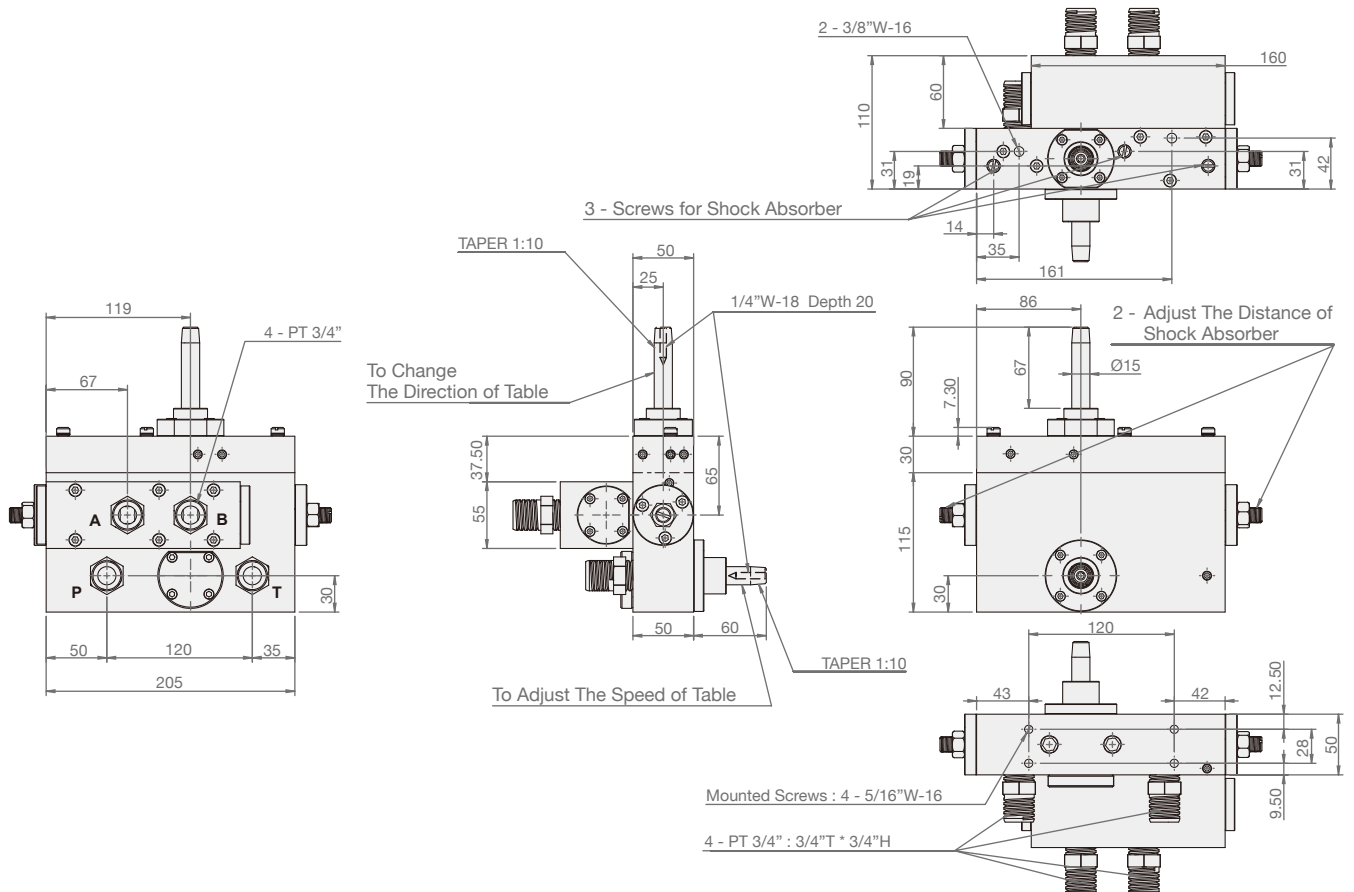


## MODEL SPEC.

Model	Rated Flow Capacity (l/min)	Max. Pressure (kgf/cm <sup>2</sup> )	Thread Connection (PT)	Weight (kg)
2040, 2448	90	40	3/4"	14.6

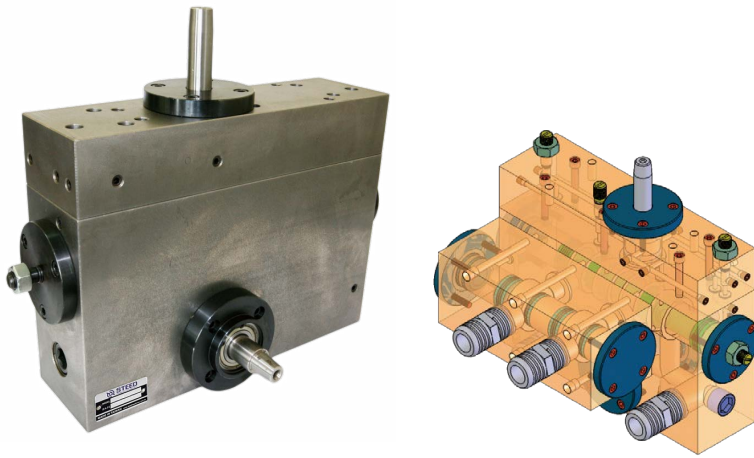
## DIMENSION

( UNIT : mm )

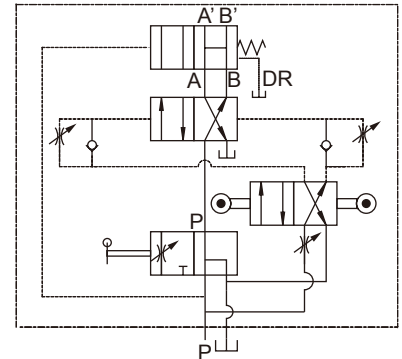




# 1512, 2012



## SYMBOLS

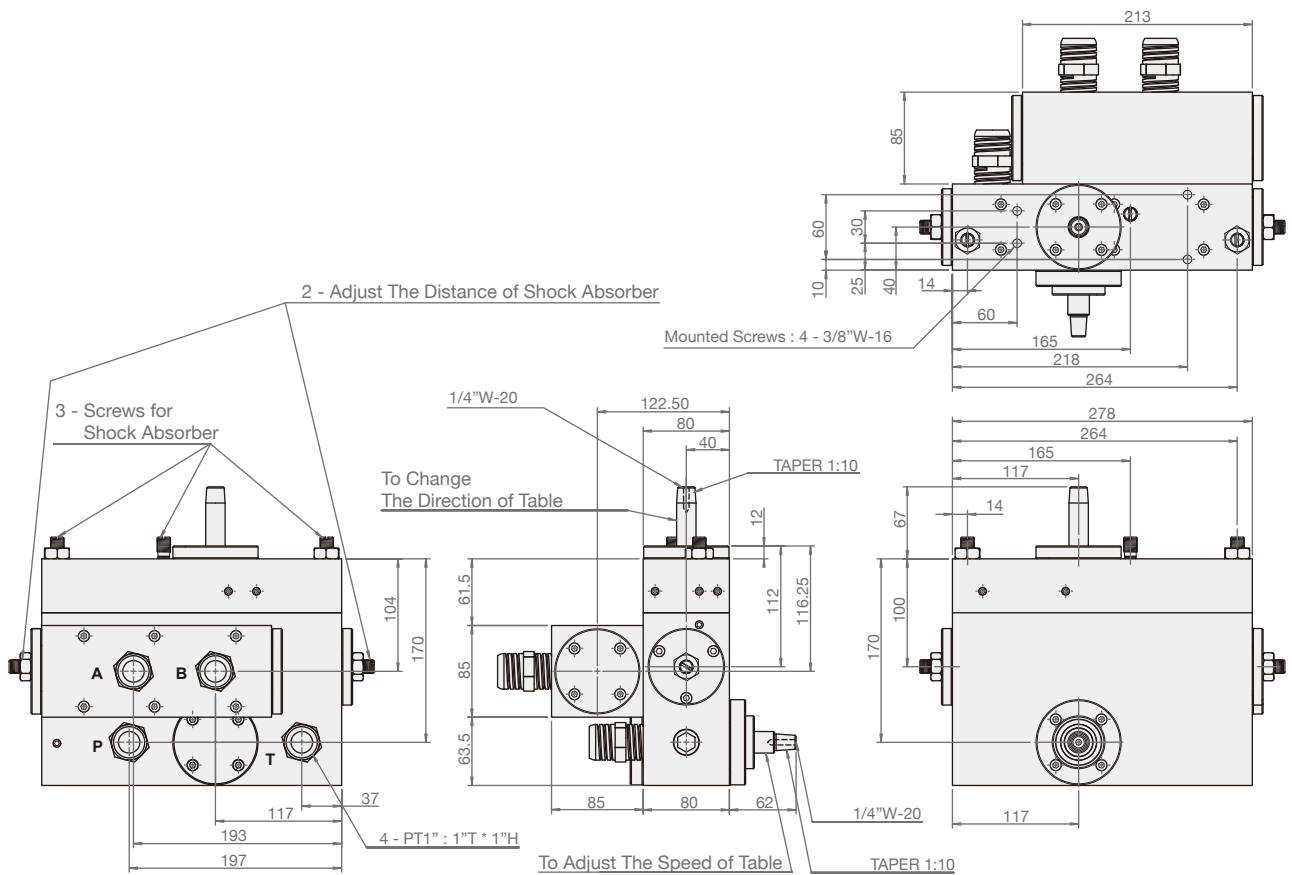


## MODEL SPEC.

Model	Rated Flow Capacity (l/min)	Max. Pressure (kgf/cm <sup>2</sup> )	Thread Connection (PT)	Weight (kg)
1512, 2012	200	40	1"	43.8
Taylor Made	300	40	1 1/4"	-

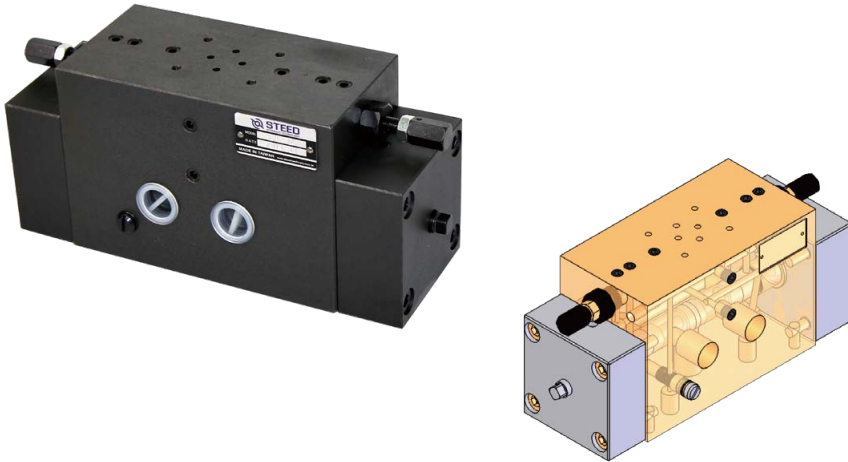
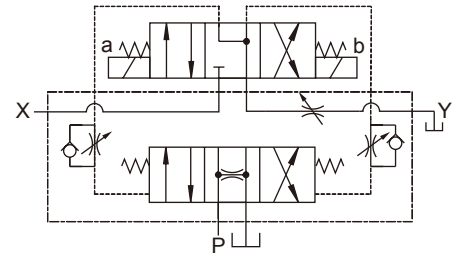
## DIMENSION

( UNIT : mm )



# SOL-04

## SYMBOLS

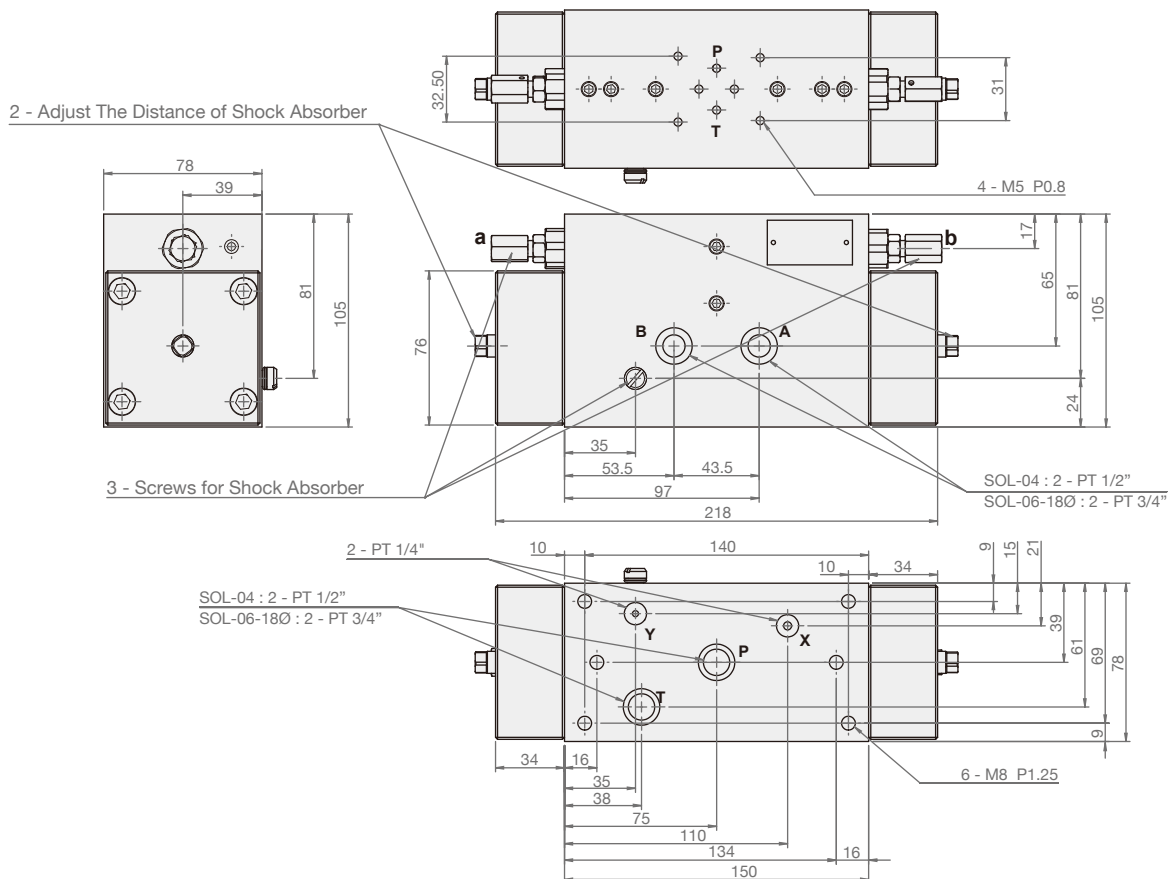


## MODEL SPEC.

Model	Rated Flow Capacity (l/min)	Max. Pressure (kgf/cm <sup>2</sup> )	Thread Connection (PT)	Weight (kg)
SOL-04	30	40	1/2"	11.3
SOL-06-180	45	40	3/4"	11.3

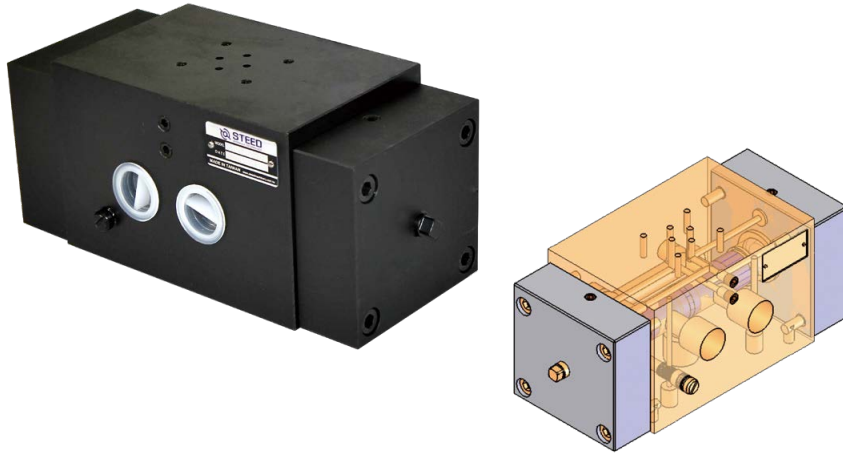
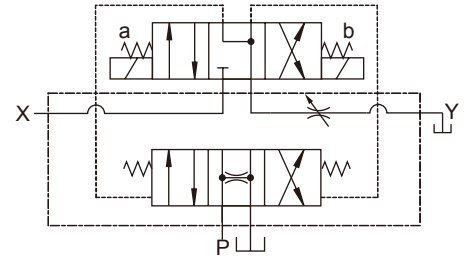
## DIMENSION

(UNIT : mm)



# SOL-06

## SYMBOLS

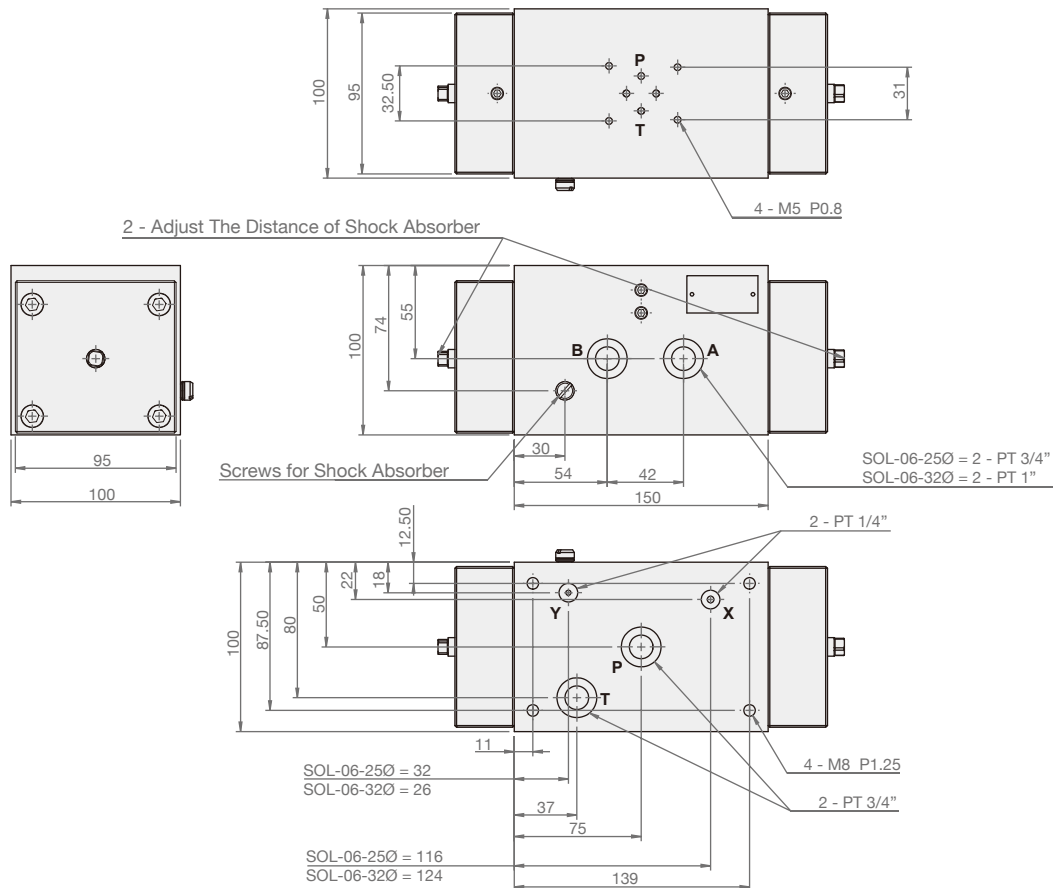


## MODEL SPEC.

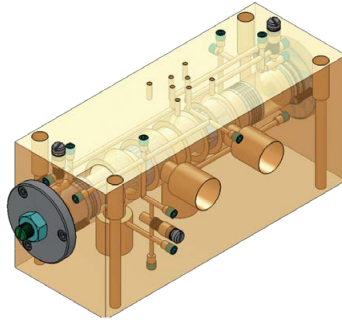
Model	Rated Flow Capacity (l/min)	Max. Pressure (kgf/cm <sup>2</sup> )	Thread Connection (PT)	Weight (kg)
SOL-06-25Ø	60	40	3/4"	14.3
SOL-06-32Ø	130	40	1", 3/4"	13.8

## DIMENSION

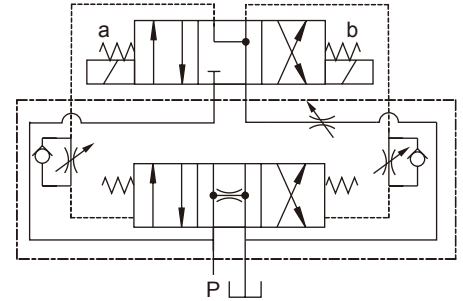
(UNIT : mm)



# SOL-08



## SYMBOLS

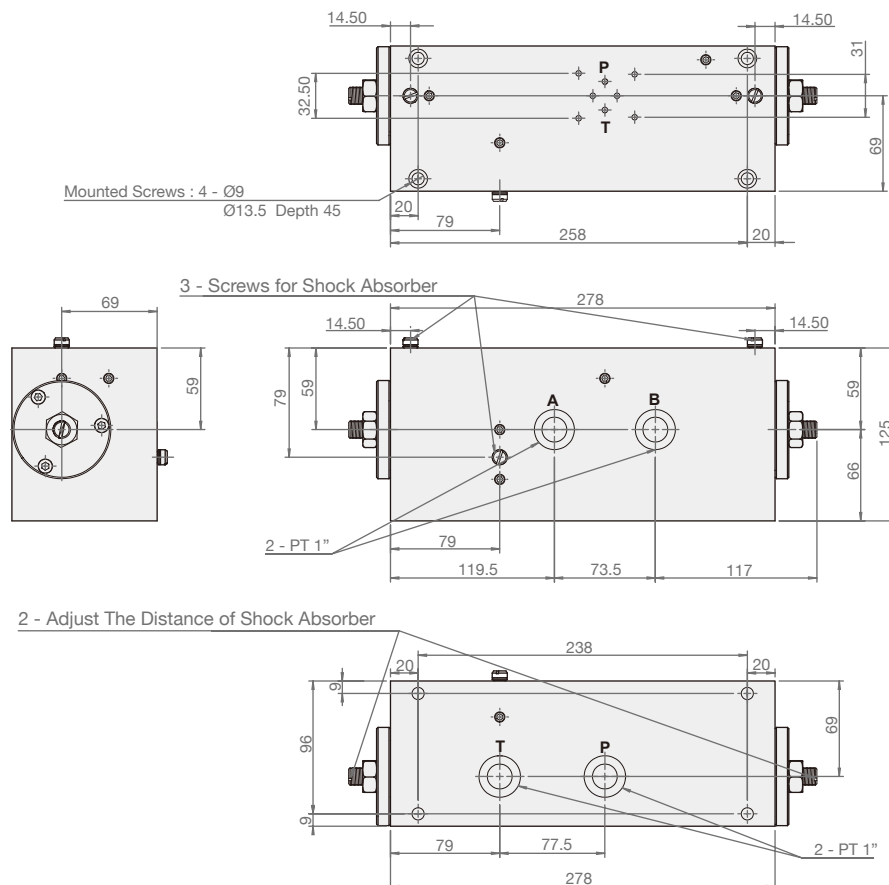


## MODEL SPEC.

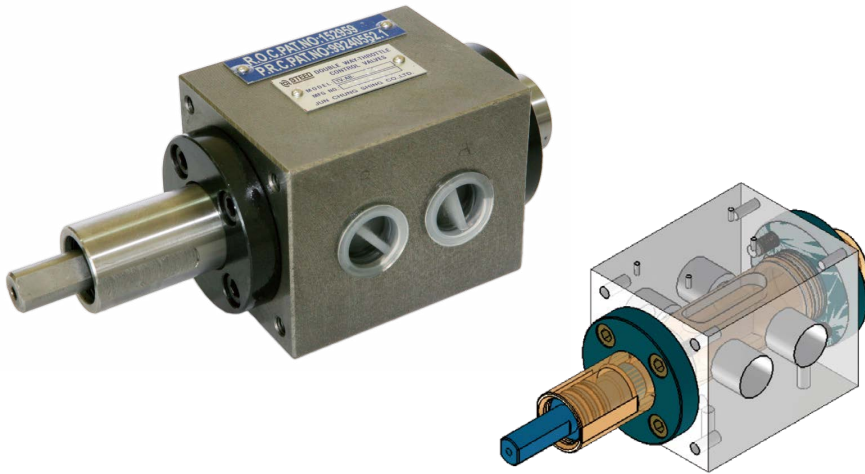
Model	Rated Flow Capacity (l/min)	Max. Pressure (kgf/cm <sup>2</sup> )	Thread Connection (PT)	Weight (kg)
SOL-08	200	40	1"	24.4
Taylor Made	300	40	1 1/4"	-

## DIMENSION

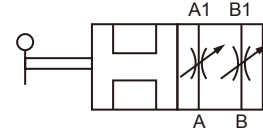
( UNIT : mm )



# TV-AB-04



## SYMBOLS

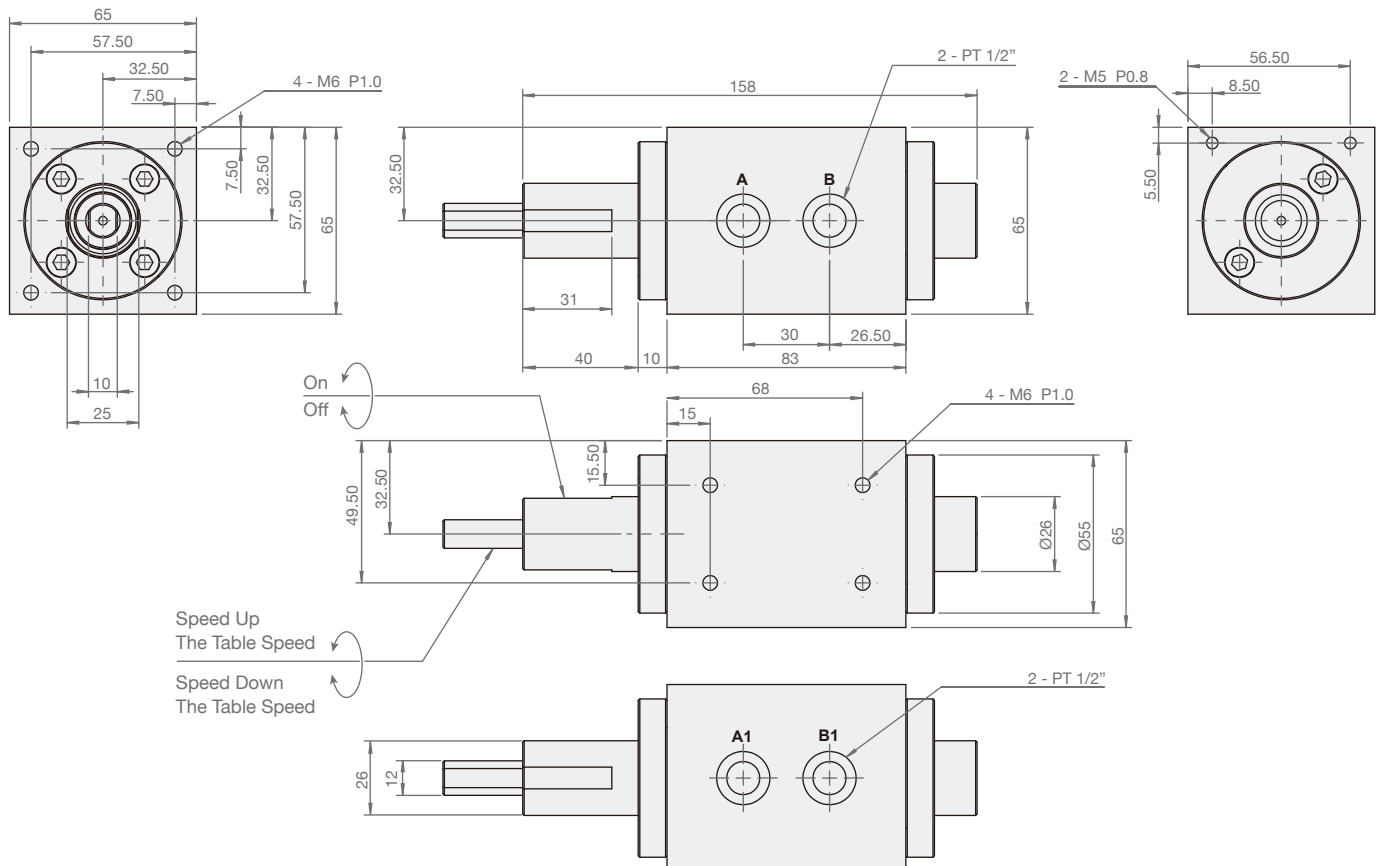


## MODEL SPEC.

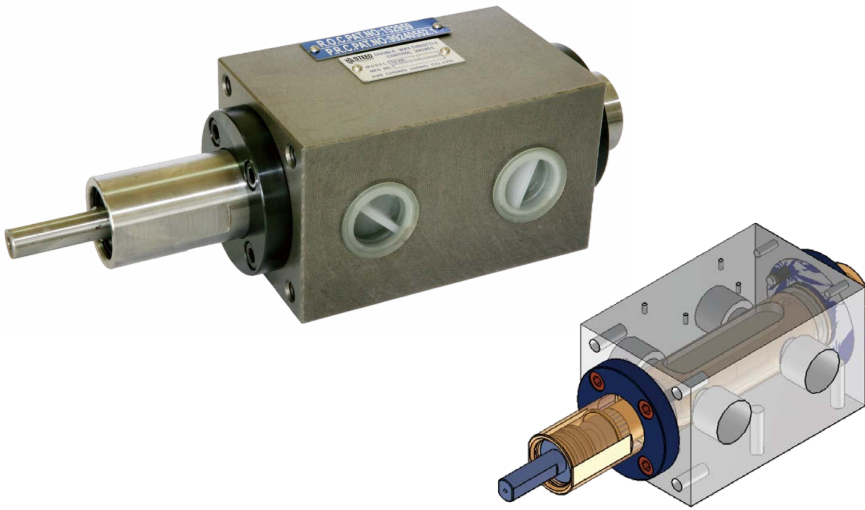
Model	Rated Flow Capacity (l/min)	Max. Pressure (kgf/cm <sup>2</sup> )	Thread Connection (PT)	Weight (kg)
TV-AB-04	80	40	1/2"	2.835

## DIMENSION

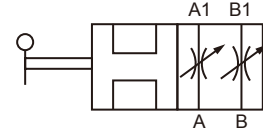
( UNIT : mm )



# TV-AB-06



## SYMBOLS

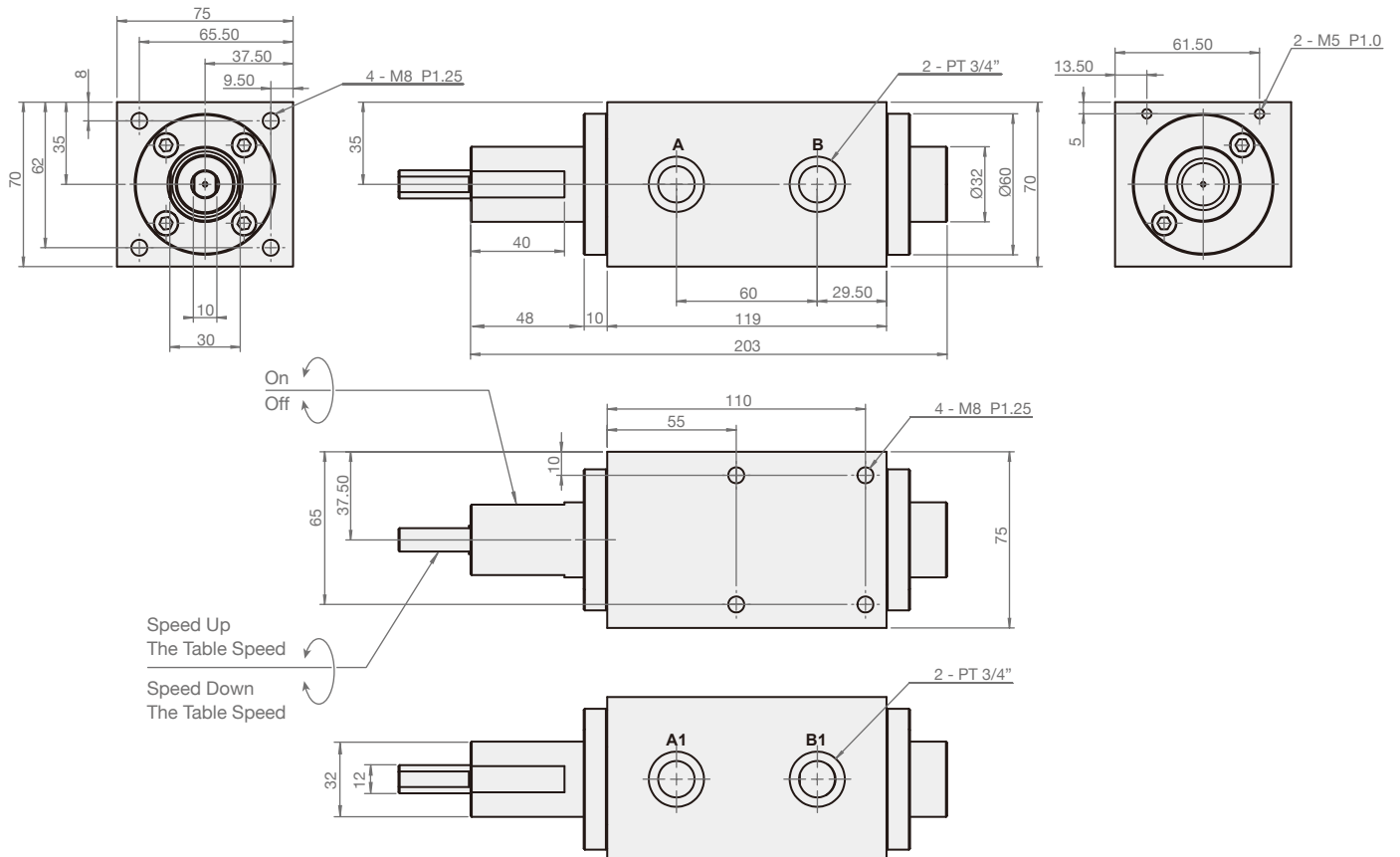


## MODEL SPEC.

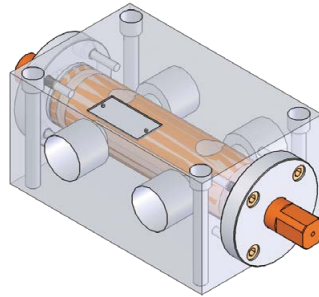
Model	Rated Flow Capacity (l/min)	Max. Pressure (kgf/cm <sup>2</sup> )	Thread Connection (PT)	Weight (kg)
TV-AB-06	130	40	3/4"	4.7

## DIMENSION

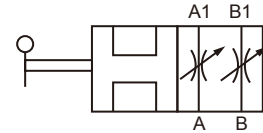
( UNIT : mm )



# TV-AB-08



## SYMBOLS

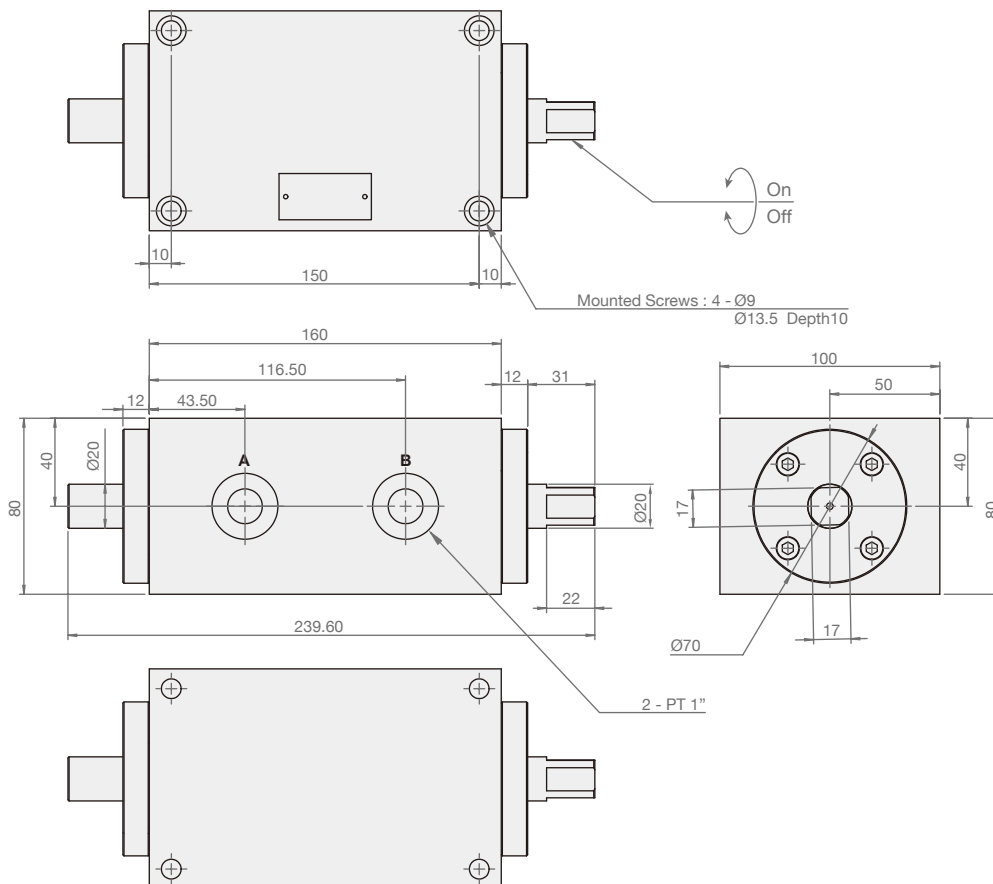


## MODEL SPEC.

Model	Rated Flow Capacity (l/min)	Max. Pressure (kgf/cm <sup>2</sup> )	Thread Connection (PT)	Weight (kg)
TV-AB-08	160	40	1"	9.1

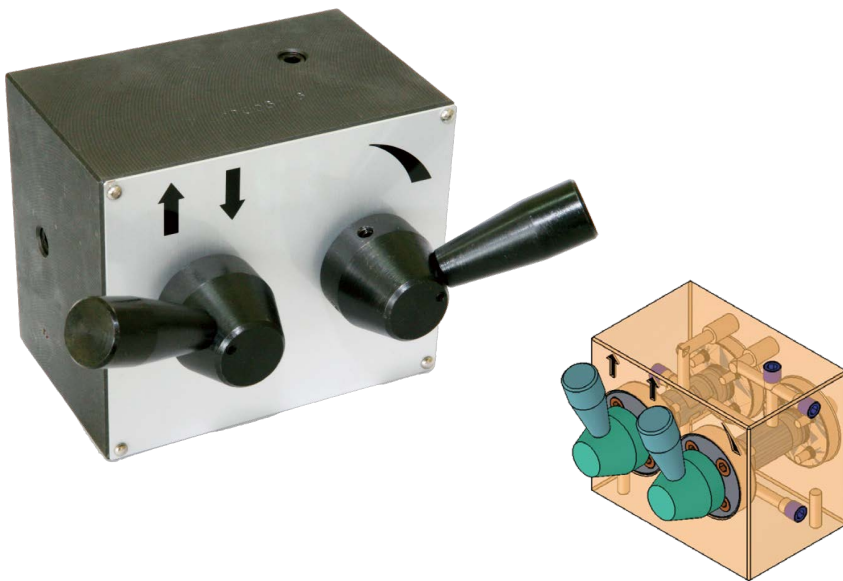
## DIMENSION

( UNIT : mm )

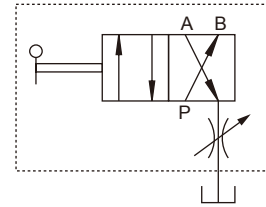




# DMOW



## SYMBOLS

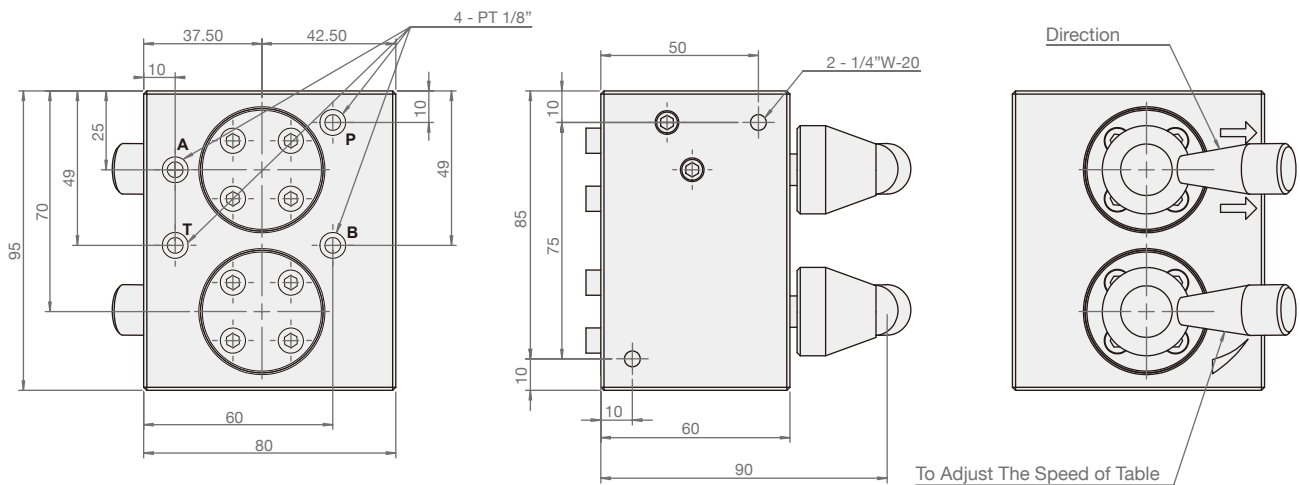


## MODEL SPEC.

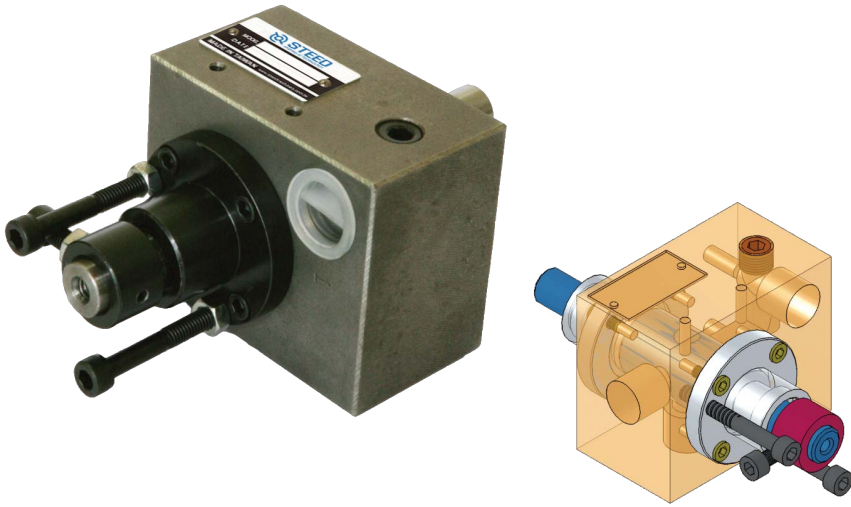
Model	Rated Flow Capacity (l/min)	Max. Pressure (kgf/cm <sup>2</sup> )	Thread Connection (PT)	Weight (kg)
DMOW	10	40	1/8"	3.2

## DIMENSION

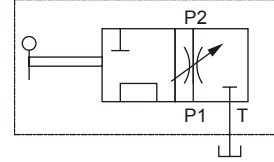
( UNIT : mm )



# SOL-04TV



## SYMBOLS

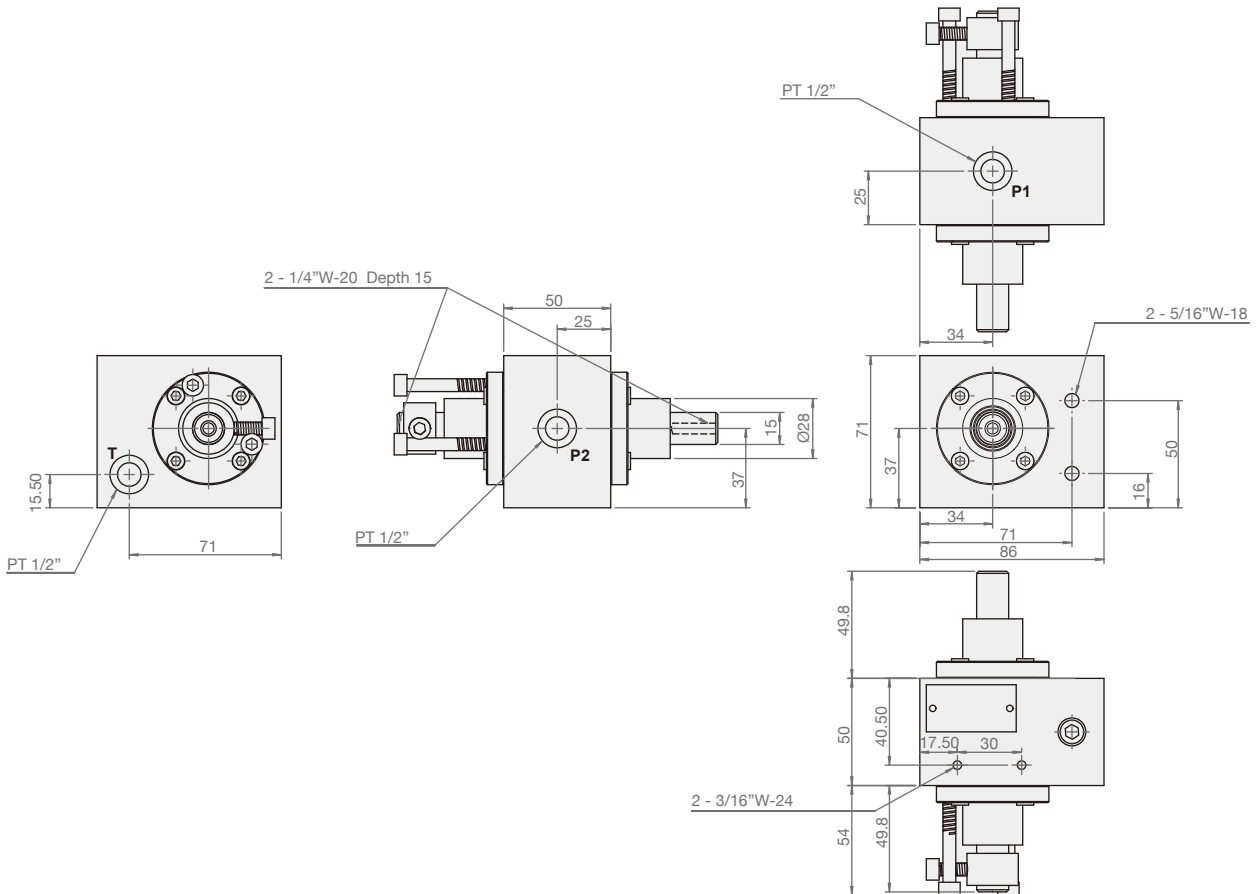


## MODEL SPEC.

Model	Rated Flow Capacity (l/min)	Max. Pressure (kgf/cm <sup>2</sup> )	Thread Connection (PT)	Weight (kg)
SOL-04TV	40	40	1/2"	2.52

## DIMENSION

( UNIT : mm )

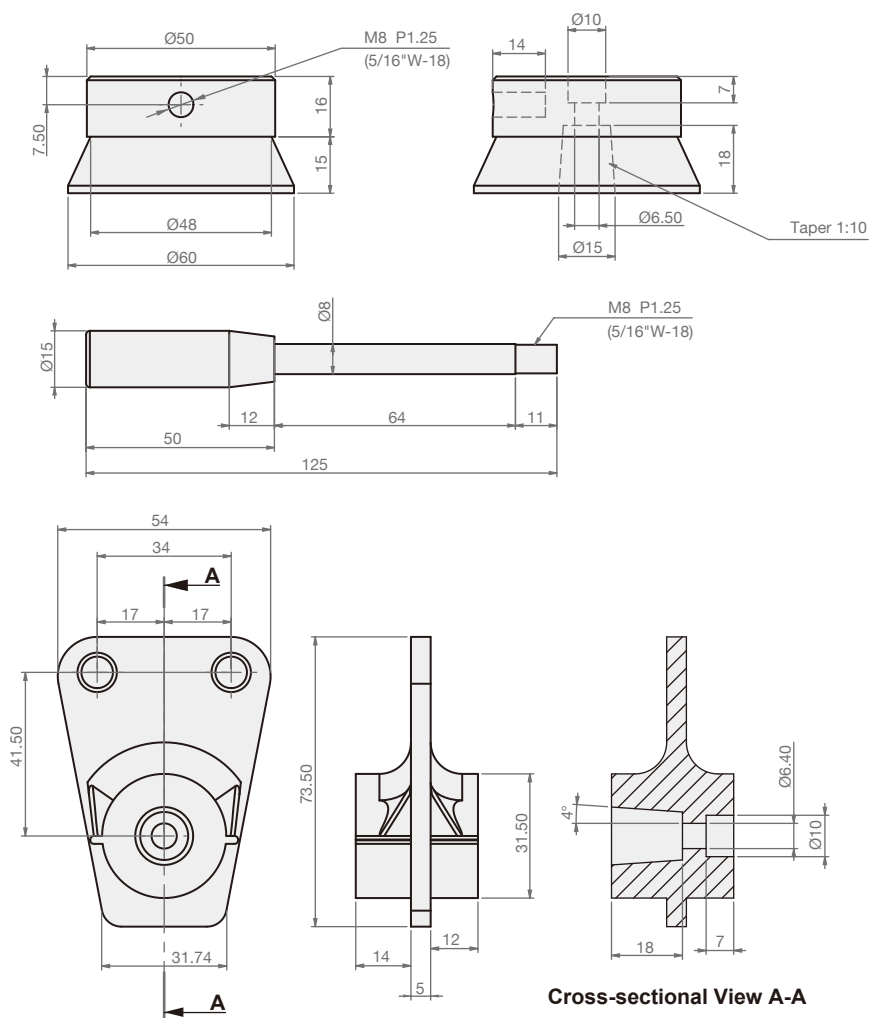


# CS



## DIMENSION

( UNIT : mm )





# Steed Machinery Co., Ltd.

No. 28, Ruiguang St., South Dist.,  
Taichung City 40249,  
Taiwan  
Tel : +886-4-2285-4867  
Fax : +886-4-2285-2848  
Email : info@steedmachinery.com.tw

more information  
[www.steedmachinery.com.tw](http://www.steedmachinery.com.tw)

